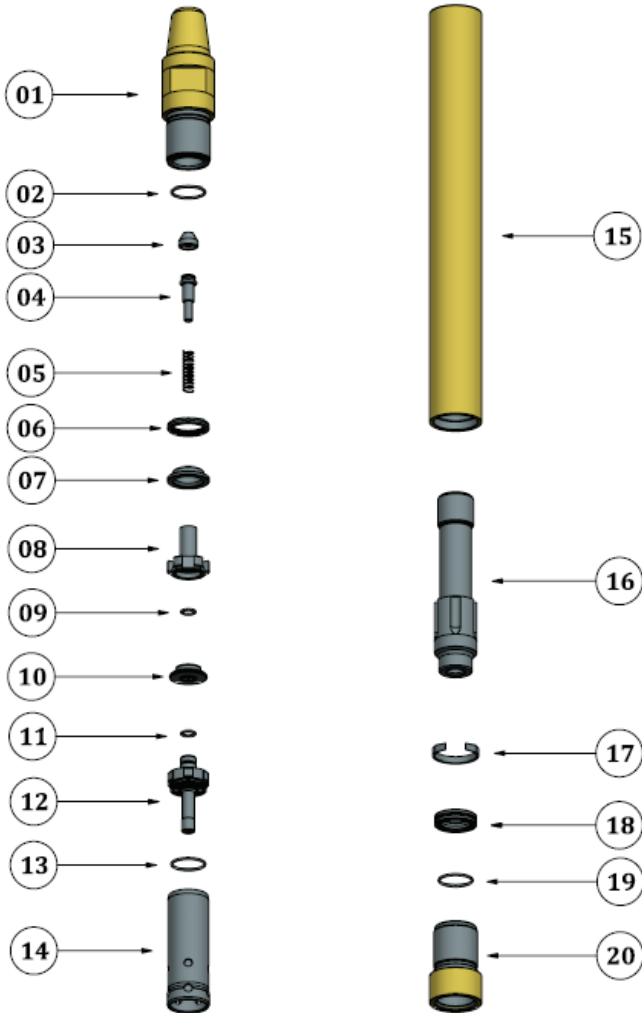


G-ROC – DOWN THE HOLE HAMMER



G-ROC always believed that the DTH Hammer offering to the customers should be simple, easy to understand and help in making a quick choice. This catalogue includes designs that are most popular and well accepted by the drilling fraternity. We offer hammers from 2" – 6" with an option to choose from different air cycles. Compatibility to standard shanks, ability to work at different air pressures and rock formations made us the perfect choice in the drilling Industry

CULT SERIES DOWN THE HOLE HAMMER



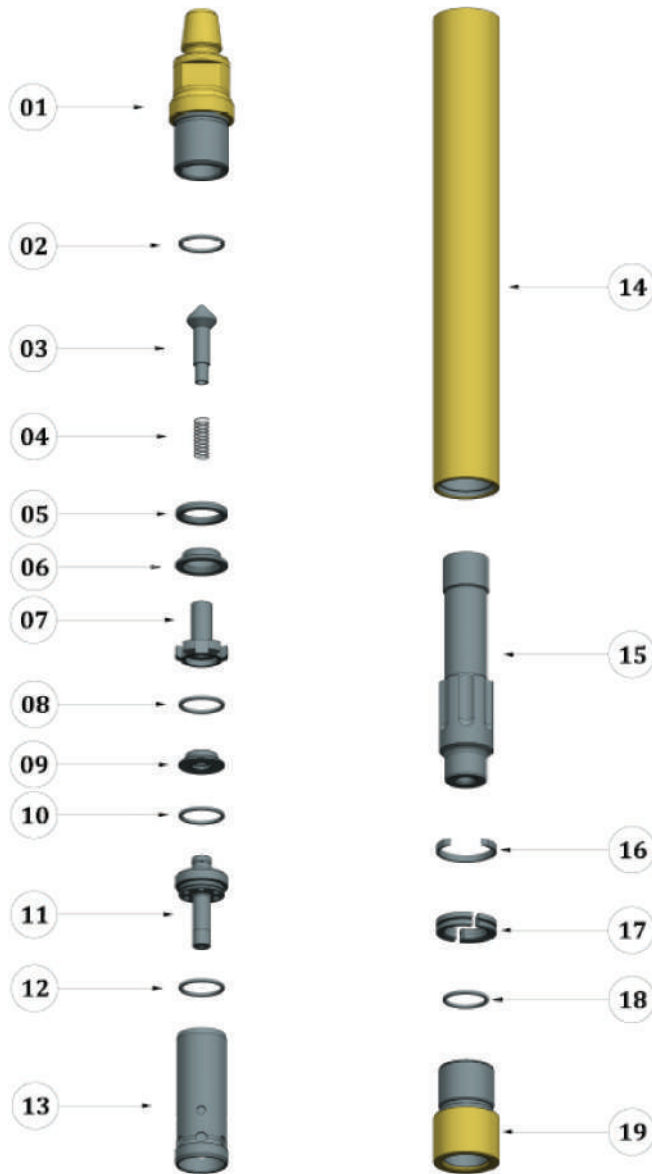
REF NO	DESCRIPTION	PART NUMBER
1	TOP SUB	22531001
2	O RING	22531002
3	CHECK VALVE SEAL	22531003
4	CHECK VALVE	22531004
5	SPRING	22531005
6	BUFFER RING	22531006
7	SPACER	22531007
8	CHECK VALVE GUIDE	22531008
9	O RING	22531009
10	VALVE	22531010
11	O RING	22531011
12	DISTRIBUTOR	22531012
13	O RING	22531013
14	LINER	22531014
15	HAMMER CASING	22531015
16	PISTON	22531016
17	PISTON RETAINING RING	22531017
18	RETAINING RING	22531018
19	O RING	22531019
20	FRONT CHUCK	22531020

GENERAL SPECIFICATIONS

Drill Pipe Connection	2 3/8" API Reg	
Bit Shank Type	DHD 3.5	
Length w/o shoulder to shoulder	776 mm	30.5"
Length with bit extended	871 mm	34.3"
Weight w/o bit	20.2	44.5 lbs
Backhead across flats	57 mm	2.2"
Button Bit size	90 - 100 mm	3.54" - 3.93"
Outside diameter	78 mm	3.1"
Piston Weight	4.06 kgs	8.9 lbs
Maximum Operating Pressure	17 bar	250 psi

Air Consumptions

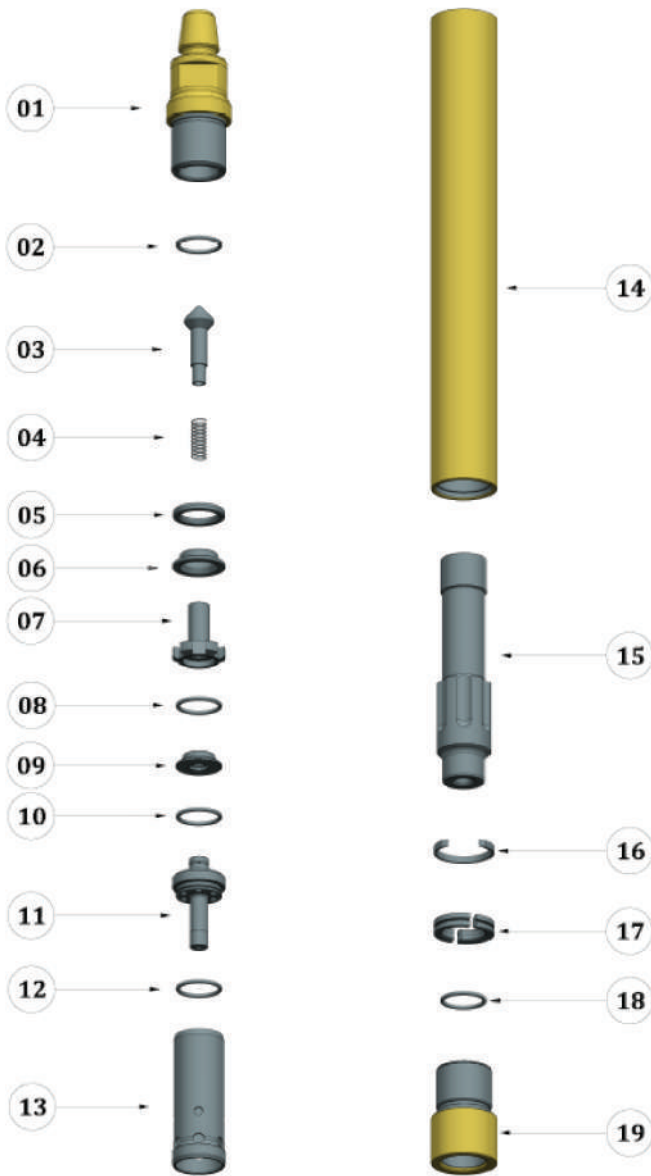
Pressure	Ltrs/ Sec	SCFM
10 bar/ 145 psi	84	177
15 bar/ 217 pi	124	263
17 bar/ 250 psi	142	305



REF NO	DESCRIPTION	PART NUMBER
1	TOP SUB	22541001
2	O RING	22541002
3	CHECK VALVE	22541003
4	SPRING	22541004
5	BUFFER RING	22541005
6	SPACER	22541006
7	CHECK VALVE GUIDE	22541007
8	O RING	22541008
9	VALVE	22541009
10	O RING	22541010
11	DISTRIBUTOR	22541011
12	O RING	22541012
13	LINER	22541013
14	HAMMER CASING	22541014
15	PISTON	22541015
16	PISTON RETAINING RING	22541016
17	BIT RETAINING RING	22541017
18	O RING	22541018
19	FRONT CHUCK	22541019

Air Consumptions		
Pressure	Ltrs/ Sec	SCFM
10 bar/ 145 psi	122.8	260
15 bar/ 217 pi	180.9	383.3
21 bar/ 300 psi	260.9	552.8

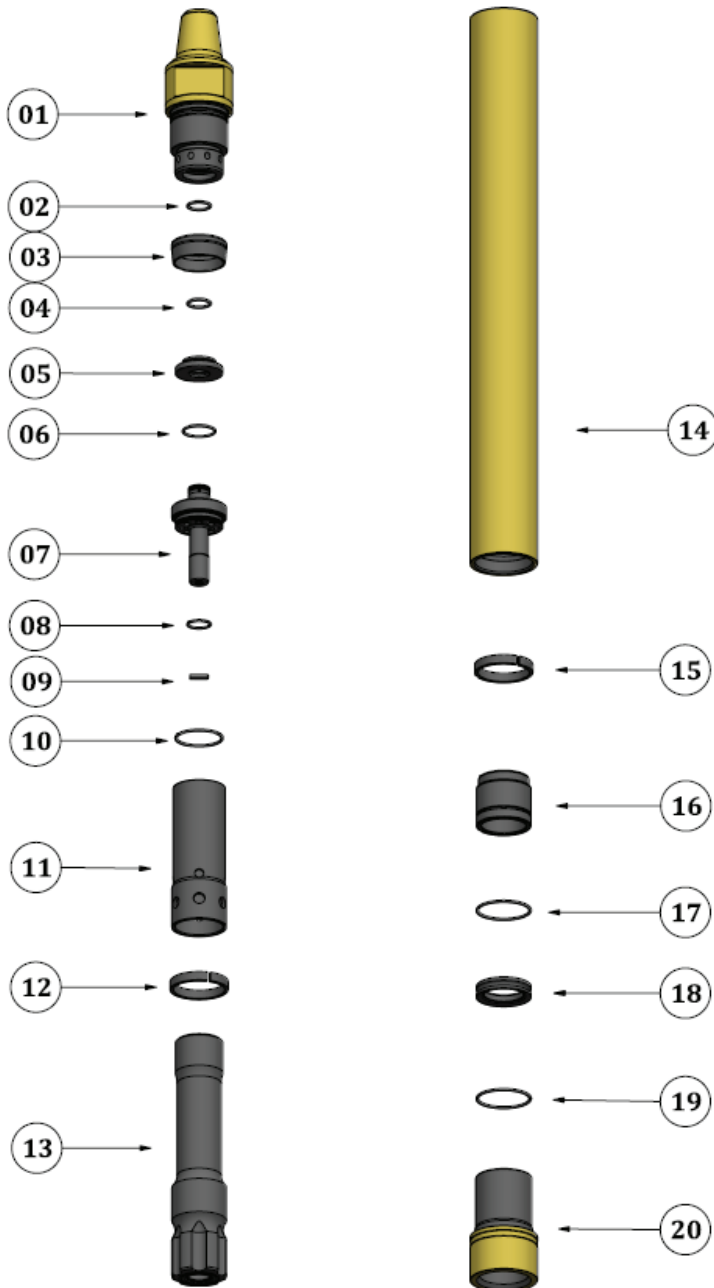
GENERAL SPECIFICATIONS		
Drill Pipe Connection	2 3/8" API Reg	
Bit Shank Type	DHD 340	
Length w/o shoulder to shoulder	920 mm	36.2"
Length with bit extended	1020 mm	40.1"
Weight w/o bit	36 kgs	79.4 lbs
Backhead across flats	61.5 mm	2.4"
Button Bit size	105 - 152 mm	5.13" - 6"
Outside diameter	98 mm	3.86 "
Piston Weight	9 kgs	19.8 lbs
Maximum Operating Pressure	21 bar	300 psi



REF NO	DESCRIPTION	PART NUMBER
1	TOP SUB	22541001
2	O RING	22541002
3	CHECK VALVE	22541003
4	SPRING	22541004
5	BUFFER RING	22541005
6	SPACER	22541006
7	CHECK VALVE GUIDE	22541007
8	O RING	22541008
9	VALVE	22541009
10	O RING	22541010
11	DISTRIBUTOR	22541011
12	O RING	22541012
13	LINER	22541013
14	HAMMER CASING	22541114
15	PISTON	22541115
16	PISTON RETAINING RING	22541016
17	BIT RETAINING RING	22541117
18	O RING	22541018
19	FRONT CHUCK	22541119

Air Consumptions		
Pressure	Ltrs/ Sec	SCFM
10 bar/ 145 psi	122.8	260
15 bar/ 217 pi	180.9	383.3
21 bar/ 300 psi	260.9	552.8
24 bar/ 350 psi	305.2	646.7

GENERAL SPECIFICATIONS		
Drill Pipe Connection	2 3/8" API Reg	
Bit Shank Type	MACH 44	
Length w/o shoulder to shoulder	955 mm	37.6"
Length with bit extended	1075 mm	42.3"
Weight w/o bit	36.5 kgs	80.5 lbs
Backhead across flats	61.5 mm	2.4"
Button Bit size	105 - 152 mm	5.13" - 6"
Outside diameter	98 mm	3.86"
Piston Weight	9 kgs	19.8 lbs
Maximum Operating Pressure	24 bar	350 psi



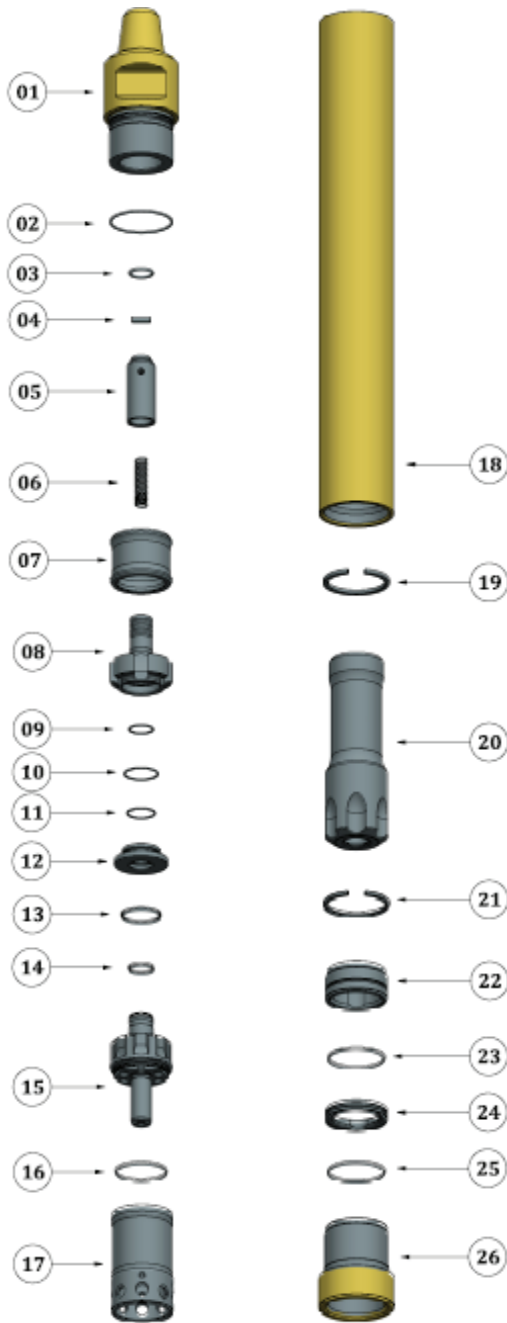
REF NO	DESCRIPTION	PART NUMBER
1	TOP SUB	22541201
2	O RING	22541202
3	SEAL CHECK VALVE	22541203
4	SEAL	22541204
5	VALVE	22541205
6	O RING	22541206
7	DISTRIBUTOR	22541207
8	O RING	22541208
9	CHOKE	22541209
10	O RING	22541210
11	LINER	22541211
12	PISTON RETAINING RING	22541212
13	PISTON	22541213
14	HAMMER CASING	22541214
15	PISTON RETAINING RING	22541214
16	BEARING	22541216
17	O RING	22541217
18	BIT RETAINING RING	22541218
19	O RING	22541219
20	FRONT CHUCK	22541220

Air Consumptions

Pressure	Ltrs/ Sec	SCFM
10 bar/ 145 psi	111	235
15 bar/ 217 pi	168	357
20 bar/ 290 psi	226	478
24 bar/ 350 psi	271	574

GENERAL SPECIFICATIONS

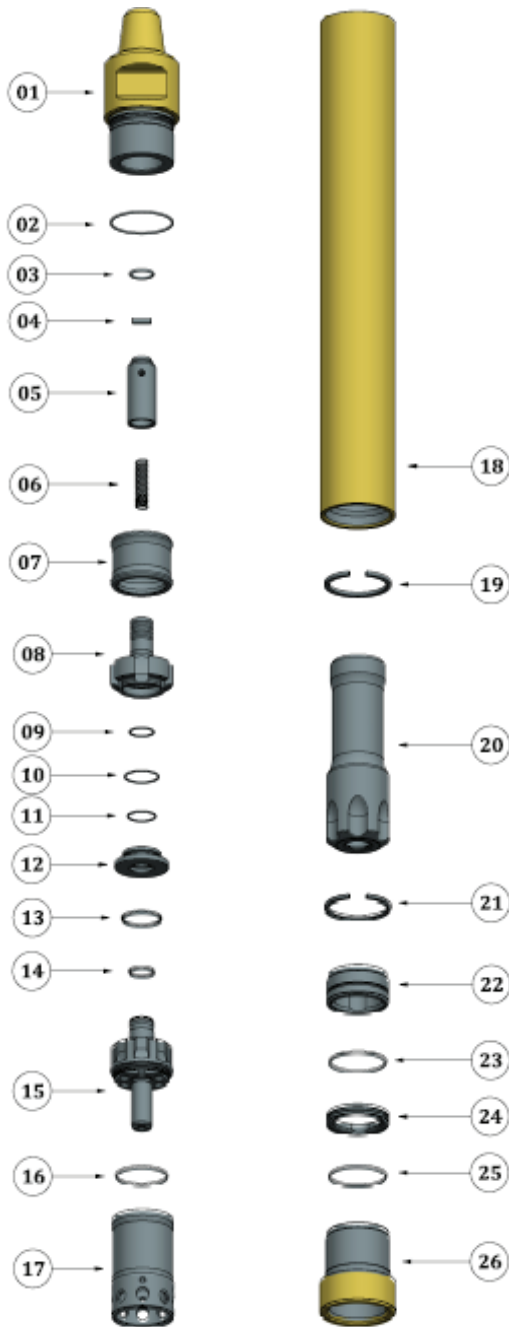
Drill Pipe Connection	2 3/8" API Reg	
Bit Shank Type	QL 40	
Length w/o shoulder to shoulder	946 mm	37.25"
Length with bit extended	1056 mm	41.58"
Weight w/o bit	35.4 kgs	77.9 lbs
Backhead across flats	63 mm	2.48"
Button Bit size	105 - 152 mm	5.13" - 6"
Outside diameter	93.7 mm	3.69"
Piston Weight	8 kgs	17.6 lbs
Maximum Operating Pressure	24 bar	350 psi



REF NO	DESCRIPTION	PART NUMBER
1	TOP SUB	22162001
2	O RING	22162002
3	CHECK VALVE SEAL	22162003
4	PLUG	22162004
5	CHECK VALVE	22162005
6	CHECK VALVE SPRING	22162006
7	SPACER	22162007
8	CHECK VALVE GUIDE	22162008
9	SEAL VLVE OD	22162009
10	O RING VALVE OD	22162010
11	SEAL VLVE ID	22162011
12	VALVE	22162012
13	O RING VALVE ID	22162013
14	O RING VALVE CAP	22162014
15	DISTRIBUTOR	22162015
16	O RING DISTRIBUTOR	22162016
17	LINER	22162017
18	CASING	22162018
19	RING	22162019
20	PISTON	22162020
21	PISTON RETAINING RING	22162021
22	BEARING	22162022
23	O RING BEARING	22162023
24	BIT RETAINING RING	22162024
25	O RING RETIANING RING	22162025
26	CHUCK	22162026

Air Consumptions		
Pressure	Ltrs/ Sec	SCFM
10 bar/ 145 psi	217	451
15 bar/ 217 pi	339	718
20 bar/ 290 psi	460	974
25 bar/ 362 psi	582	1232
30 bar/ 435 psi	700	1483
35 bar/ 508 psi	825	1738

GENERAL SPECIFICATIONS		
Drill Pipe Connection	3 1/2" API Reg	
Bit Shank Type	QL 60	
Length w/o shoulder to shoulder	1129 mm	44.46"
Length with bit extended	1267.6 mm	49.9"
Weight w/o bit	90.3	198.7 lbs
Backhead across flats	101.66 mm	4.0"
Button Bit size	152 - 203 mm	5" - 8"
Outside diameter	138 mm	5.44 "
Piston Weight	19.0 kgs	41.9 lbs
Maximum Operating Pressure	35 bar	508 psi



REF NO	DESCRIPTION	PART NUMBER
1	TOP SUB	22161001
2	O RING	22161002
3	CHECK VALVE SEAL	22161003
4	PLUG	22161004
5	CHECK VALVE	22161005
6	CHECK VALVE SPRING	22161006
7	SPACER	22161007
8	CHECK VALVE GUIDE	22161008
9	SEAL VLVE OD	22161009
10	O RING VALVE OD	22161010
11	SEAL VLVE ID	22161011
12	VALVE	22161012
13	O RING VALVE ID	22161013
14	O RING VALVE CAP	22161014
15	DISTRIBUTOR	22161015
16	O RING DISTRIBUTOR	22161016
17	LINER	22161017
18	CASING	22161018
19	RING	22161019
20	PISTON	22161020
21	PISTON RETAINING RING	22161021
22	BEARING	22161022
23	O RING BEARING	22161023
24	BIT RETAINING RING	22161024
25	O RING RETIANING RING	22161025
26	CHUCK	22161026

Air Consumptions

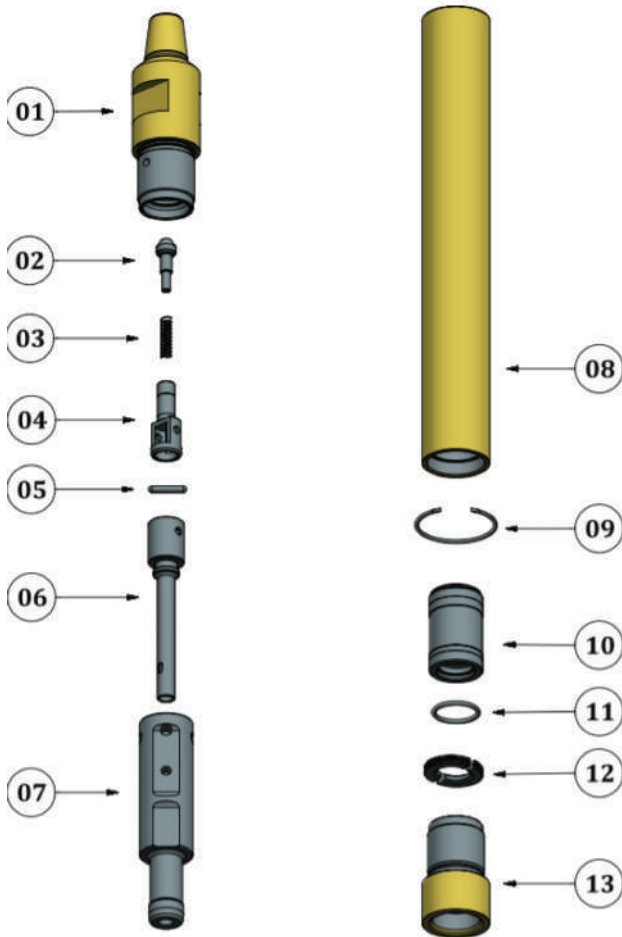
Pressure	Ltrs/ Sec	SCFM
10 bar/ 145 psi	217	451
15 bar/ 217 pi	339	718
20 bar/ 290 psi	460	974
25 bar/ 362 psi	582	1232
30 bar/ 435 psi	700	1483
35 bar/ 508 psi	825	1738

GENERAL SPECIFICATIONS

Drill Pipe Connection	3 1/2" API Reg	
Bit Shank Type	QL 60	
Length w/o shoulder to shoulder	1129 mm	44.46"
Length with bit extended	1267.6 mm	49.9"
Weight w/o bit	90.3	198.7 lbs
Backhead across flats	101.66 mm	4.0"
Button Bit size	165 - 203 mm	6.5" - 8"
Outside diameter	148 mm	5.8 "
Piston Weight	19.0 kgs	41.9 lbs
Maximum Operating Pressure	35 bar	508 psi



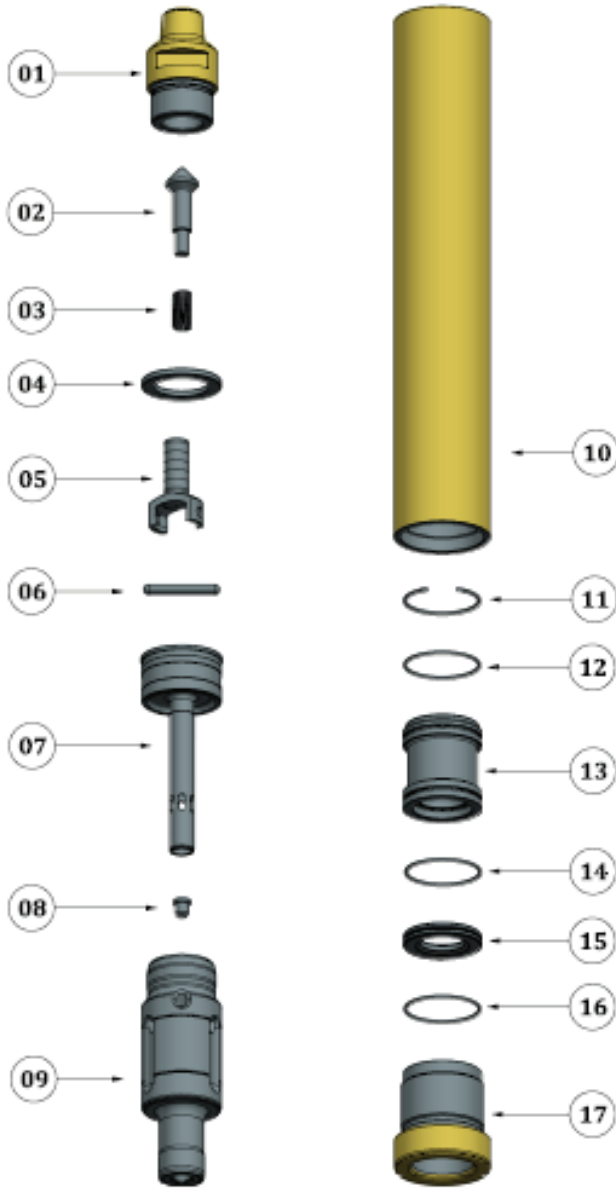
SWIFT SERIES DOWN THE HOLE HAMMER



REF NO	DESCRIPTION	PART NUMBER
1	TOP SUB	23541001
2	CHECK VALVE	23541002
3	SPRING	23541003
4	CHECK VALVE GUIDE	23541004
5	LOCK PIN	23541005
6	CONTROL TUBE	23541006
7	PISTON	23541007
8	HAMMER CASE	23541008
9	PISTON LOCK RING	23541009
10	GUIDE BUSH	23541010
11	O-RING	23541012
12	BIT RETAINING RING	23541013
13	DRIVER CHUCK	23541014

Air Consumptions		
Pressure	Ltrs/ Sec	SCFM
10 bar/ 145 psi	84	177
15 bar/ 217 pi	124	263
17 bar/ 250 psi	142	305

GENERAL SPECIFICATIONS		
Drill Pipe Connection	2 3/8" API Reg Pin	
Bit Shank Type	M4	
Length w/o shoulder to shoulder	750 mm	30.5"
Length with bit extended	760 mm	29.92"
Weight w/o bit	39 kgs	85.98 lbs
Backhead across flats	48.5 mm	1.9"
Button Bit size	105 – 140 mm	4.13" – 5.0"
Outside diameter	98 mm	3.85"
Piston Weight	11.5 kgs	25.35 lbs
Maximum Operating Pressure	24 bar	350 psi



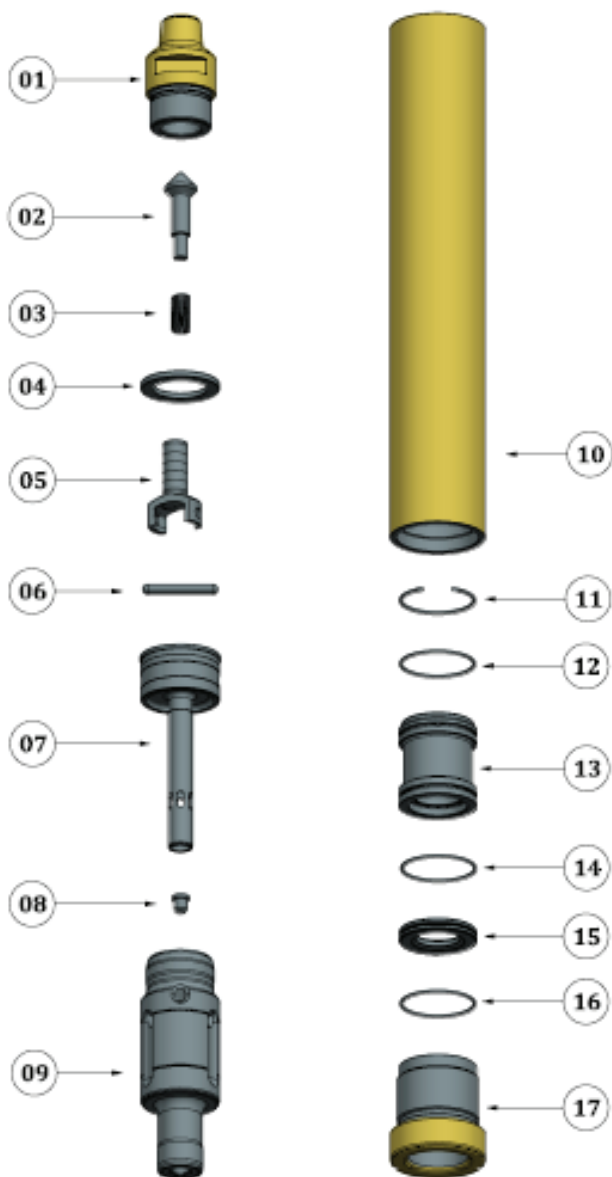
REF NO	DESCRIPTION	PART NUMBER
1	TOP SUB	23351001
2	CHECK VALVE	23351002
3	SPRING	23351003
4	BUFFER RING	23351004
5	CHECK VALVE GUIDE	23351005
6	LOCK PIN	23351006
7	CONTROL TUBE	23351007
8	CHOKE PLUG	23351008
9	PISTON	23351009
10	HAMMER CASE	23351010
11	PISTON RETAINING RING	23351011
12	O-RING	23351012
13	GUIDE BUSH	23351013
14	O-RING	23351014
15	BIT RETAINER RING	23351015
16	O-RING	23351016
17	DRIVER CHUCK	23351017

AIR CONSUMPTIONS

Pressure	Ltrs/ Sec	SCFM
10 bar/ 145 psi	117	248
17 bar/ 246 psi	247	523
21 bar/ 304 psi	318	673
23 bar/ 333 psi	351	744
25 bar/ 345 psi	385	817

GENERAL SPECIFICATIONS

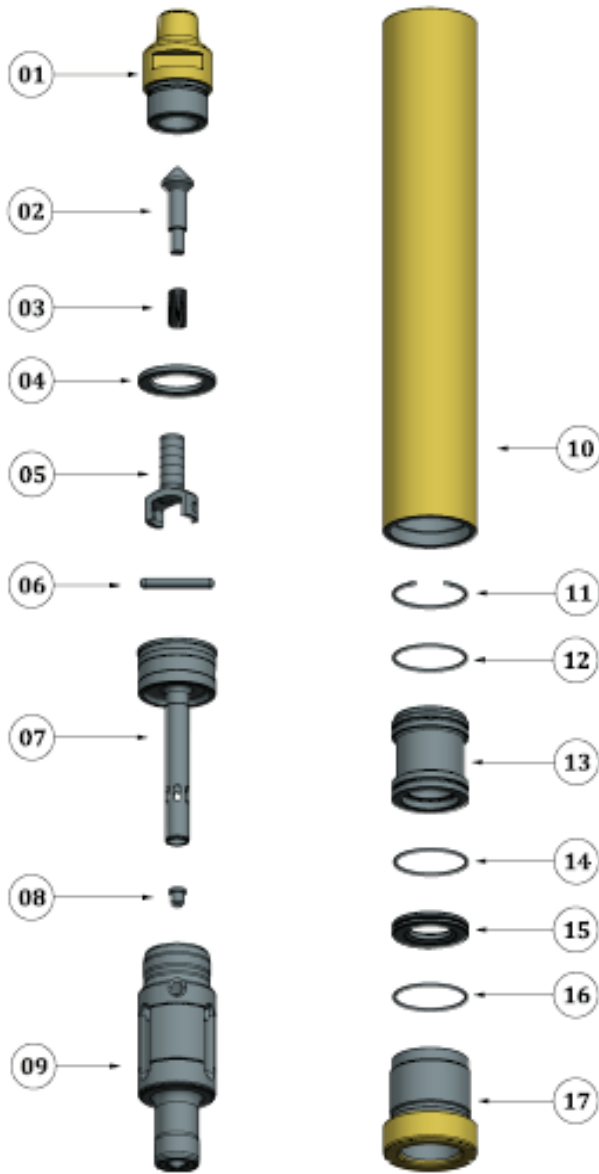
Drill Pipe Connection	2 7/8" API Reg Pin	
Bit Shank Type	P5	
Length w/o shoulder to shoulder	998 mm	32.3"
Length with bit extended	1131	44.5"
Weight w/o bit	80 kgs	176.4 lbs
Backhead across flats	90 mm	3.6"
Button Bit size	152 – 165mm	6" – 6.5"
Outside diameter	142 mm	5.6"
Piston Weight	18.6 kgs	41 lbs
Maximum Operating Pressure	25 bar	362 psi



REF NO	DESCRIPTION	PART NUMBER
1	TOP SUB	23351101
2	CHECK VALVE	23351102
3	SPRING	23351103
4	BUFFER RING	23351104
5	CHECK VALVE GUIDE	23351105
6	LOCK PIN	23351106
7	CONTROL TUBE	23351107
8	CHOKER PLUG	23351108
9	PISTON	23351109
10	HAMMER CASE	23351110
11	PISTON RETAINING RING	23351111
12	O-RING	23351112
13	GUIDE BUSH	23351113
14	O-RING	23351114
15	BIT RETAINER RING	23351115
16	O-RING	23351116
17	DRIVER CHUCK	23351117

AIR CONSUMPTIONS		
Pressure	Ltrs/Sec	SCFM
10 bar/ 145 psi	117	248
17 bar/ 246 psi	247	523
21 bar/ 304 psi	318	673
23 bar/ 333 psi	351	744
25 bar/ 345 psi	385	817

GENERAL SPECIFICATIONS		
Drill Pipe Connection	2 7/8" API Reg Pin	
Bit Shank Type	Mission 5	
Length w/o shoulder to shoulder	998 mm	32.3"
Length with bit extended	1131	44.5"
Weight w/o bit	80 kgs	176.4 lbs
Backhead across flats	90 mm	3.6"
Button Bit size	152 - 165mm	6" - 6.5"
Outside diameter	142 mm	5.6"
Piston Weight	18.6 kgs	41 lbs
Maximum Operating Pressure	25 bar	362 psi



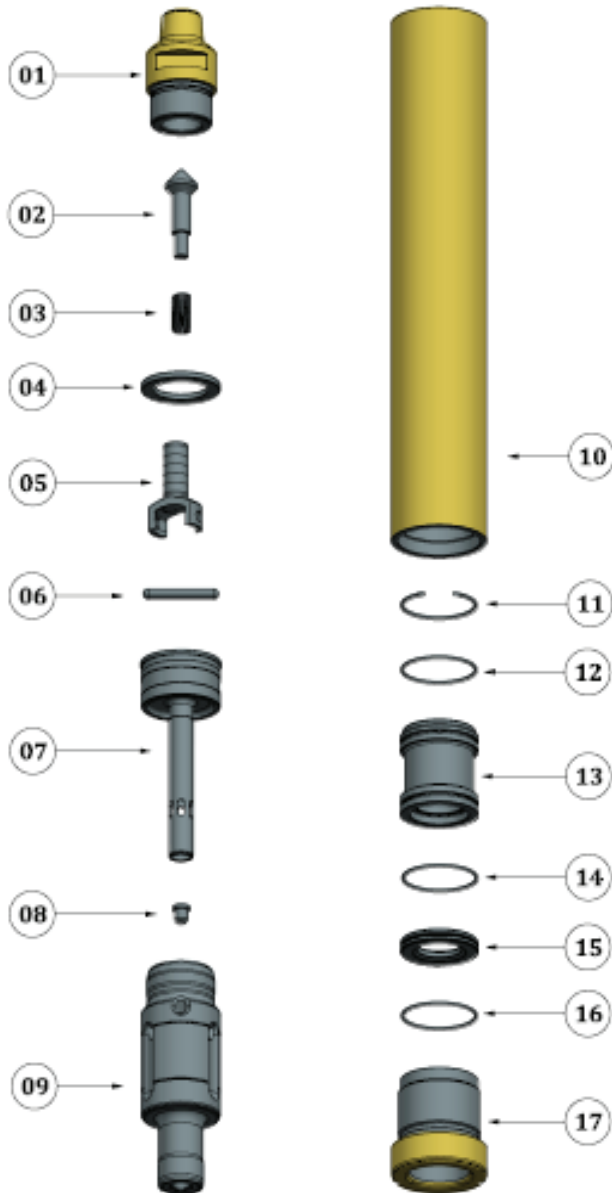
REF NO	DESCRIPTION	PART NUMBER
1	TOP SUB	23355001
2	CHECK VALVE	23355002
3	SPRING	23355003
4	BUFFER RING	23355004
5	CHECK VALVE GUIDE	23355005
6	LOCK PIN	23355006
7	CONTROL TUBE	23355007
8	CHOKE PLUG	23355008
9	PISTON	23355009
10	HAMMER CASE	23355010
11	PISTON RETAINING RING	23355011
12	O-RING	23355012
13	GUIDE BUSH	23355013
14	O-RING	23355014
15	BIT RETAINER RING	23355015
16	O-RING	23355016
17	DRIVER CHUCK	23355017

AIR CONSUMPTIONS

Pressure	Ltrs/ Sec	SCFM
10 bar/ 145 psi	117	248
17 bar/ 246 psi	247	523
21 bar/ 304 psi	318	673
23 bar/ 333 psi	351	744
25 bar/ 345 psi	385	817

GENERAL SPECIFICATIONS

Drill Pipe Connection	2 7/8" API Reg Pin	
Bit Shank Type	Q5N	
Length w/o shoulder to shoulder	998 mm	32.3"
Length with bit extended	1131	44.5"
Weight w/o bit	80 kgs	176.4 lbs
Backhead across flats	90 mm	3.6"
Button Bit size	152 - 165mm	6" - 6.5"
Outside diameter	142 mm	5.6"
Piston Weight	18.6 kgs	41 lbs
Maximum Operating Pressure	25 bar	362 psi



REF NO	DESCRIPTION	PART NUMBER
1	TOP SUB	23160001
2	CHECK VALVE	23160002
3	SPRING	23160003
4	BUFFER RING	23160004
5	CHECK VALVE GUIDE	23160005
6	LOCK PIN	23160006
7	CONTROL TUBE	23160007
8	CHOKE PLUG	23160008
9	PISTON	23160009
10	HAMMER CASE	23160010
11	PISTON RETAINING RING	23160011
12	O-RING	23160012
13	GUIDE BUSH	23160013
14	O-RING	23160014
15	BIT RETAINER RING	23160015
16	O-RING	23160016
17	DRIVER CHUCK	23160017

AIR CONSUMPTIONS

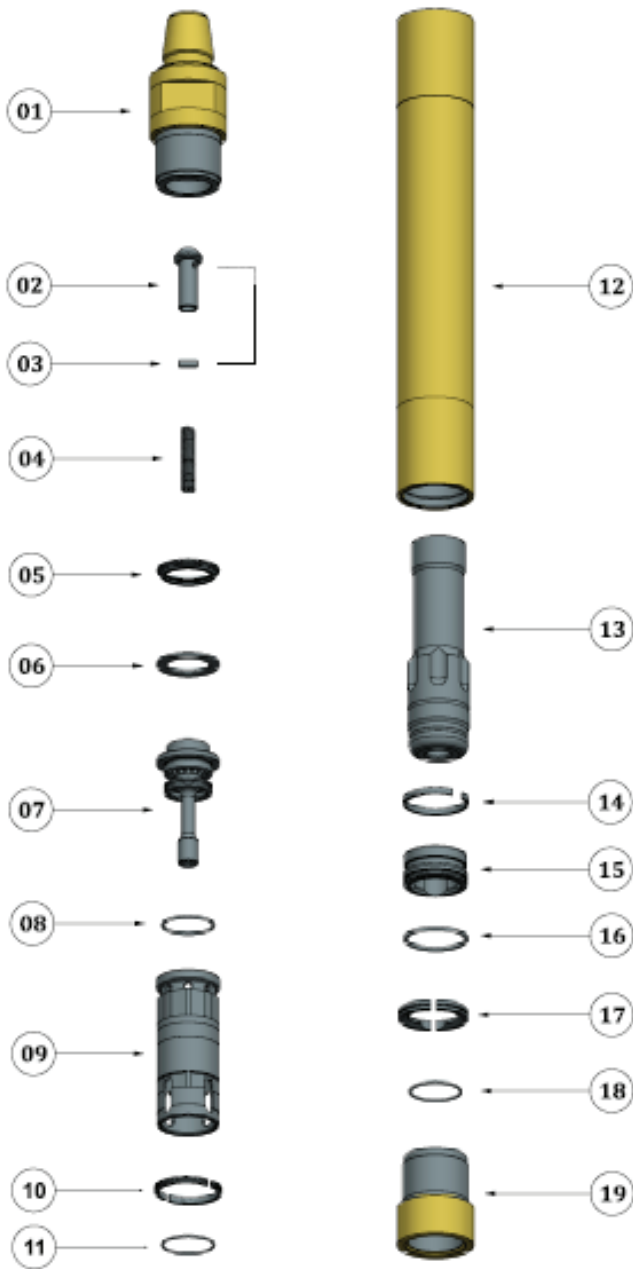
Pressure	Ltrs/ Sec	SCFM
10 bar/ 145 psi	133	281
17 bar/ 246 psi	280	594
21 bar/ 304 psi	360	765
23 bar/ 333 psi	391	845
25 bar/ 362 psi	438	928

GENERAL SPECIFICATIONS

Drill Pipe Connection	3 1/2" API Reg	
Bit Shank Type	M6	
Length w/o shoulder to shoulder	998 mm	33.3"
Length with bit extended	1131	44.5"
Weight w/o bit	93.6 kgs	203.6 lbs
Backhead across flats	90 mm	3.5"
Button Bit size	165 – 203mm	6.5" – 8"
Outside diameter	148 mm	5.8"
Piston Weight	19.1 kgs	42.4 lbs
Maximum Operating Pressure	25 bar	362 psi



BRAVO SERIES DOWN THE HOLE HAMMER



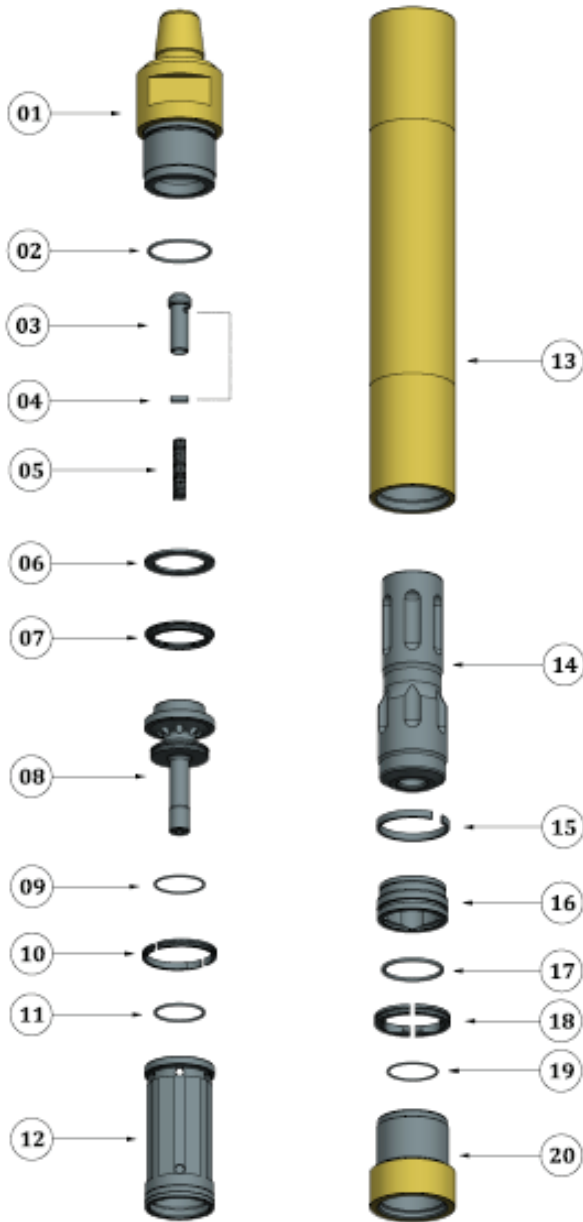
REF NO	DESCRIPTION	PART NUMBER
1	TOP SUB	21350001
2	CHECK VALVE	21350002
3	CHOKE	21350003
4	SPRING	21350004
5	STEEL MAKE UP RING	21350005
6	LOCK RING	21350006
7	AIR DISTRIBUTOR	21350007
8	O RING	21350008
9	LINER	21350009
10	SEATING TING	21350010
11	O RING	21350011
12	CASING	21350012
13	PISTON	21350013
14	PISTON RETAINING RING	21350014
15	BEARING	21350015
16	O RING	21350016
17	BIT RETAINING RING	21350017
18	O RING	21350018
19	CHUCK	21350019
O RING KIT (8, 11, 16, 18)		21350020
SERVICE KIT (O RING KIT, SPRING, CHECK VALVE, CHOKE)		21350021

GENERAL SPECIFICATIONS

Drill Pipe Connection	2 7/8" API Reg	
Bit Shank Type	QL50	
Length w/o shoulder to shoulder	994 mm	39.0"
Length with bit extended	1167.6 mm	45.9"
Weight w/o bit	70 Kgs	216 lbs
Backhead across flats	90 mm	4.0"
Button Bit size	140 - 165 mm	5.5" - 6.5"
Outside diameter	124 mm	4.9"
Piston Weight	15.0 kgs	33.4 lbs
Maximum Operating Pressure	25 bar	362 psi

Air Consumptions

Pressure	Ltrs/ Sec	SCFM
10 bar/ 145 psi	139	295
15 bar/ 217 pi	219	465
20 bar/ 290 psi	342	725
25 bar/ 362 psi	437	927
30 bar/ 435 psi	565	1198



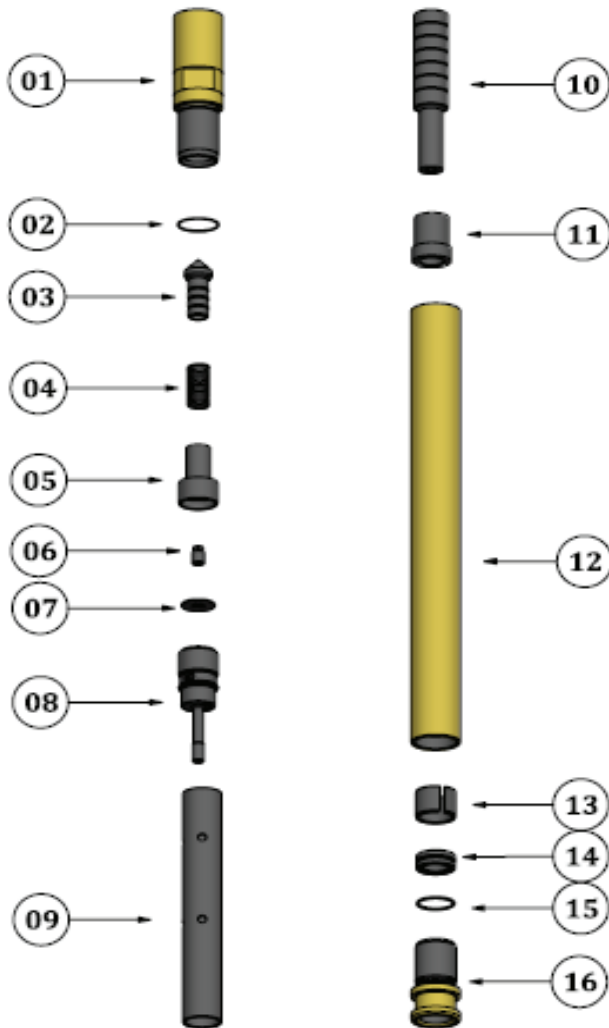
REF NO	DESCRIPTION	PART NUMBER
1	TOP SUB	21160001
2	O RING	21160002
3	CHECK VALVE	21160003
4	CHOKE	21160004
5	SPRING	21160005
6	STEEL MAKE UP RING	21160006
7	LOCK RING	21160007
8	AIR DISTRIBUTOR	21160008
9	O RING	21160009
10	SEATING RING	21160010
11	O RING	21160011
12	LINER	21160012
13	CASING	21160013
14	PISTON	21160014
15	PISTON RETAINING RING	21160015
16	BEARING	21160016
17	O RING	21160017
18	BIT RETAINING RING	21160018
19	O RING	21160019
20	CHUCK	21160020
O RING KIT (2, 8, 10, 16, 18)		21160021
SERVICE KIT (O RING KIT, SPRING, CHECK VALVE, CHOKE)		21160022

Air Consumptions

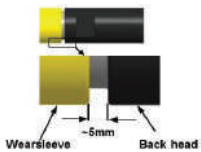
Pressure	Ltrs/ Sec	SCFM
10 bar/ 145 psi	217	450
15 bar/ 217 pi	339	718
20 bar/ 290 psi	460	974
25 bar/ 362 psi	582	1232
30 bar/ 435 psi	700	1483

GENERAL SPECIFICATIONS

Drill Pipe Connection	3 1/2" API Reg	
Bit Shank Type	QL 60	
Length w/o shoulder to shoulder	1034 mm	40.7"
Length with bit extended	1267.6 mm	49.9"
Weight w/o bit	98 Kgs	216 lbs
Backhead across flats	100 mm	4.0"
Button Bit size	152 - 203 mm	6.5" - 8"
Outside diameter	148 mm	5.8"
Piston Weight	20.0 kgs	44 lbs
Maximum Operating Pressure	30 bar	435 psi



REF NO	DESCRIPTION	PART NUMBER
1	TOP SUB	24621001
2	O RING*	24621002
3	CHECK VALVE	24621003
4	CHECK VALVE SPRING	24621004
5	TOP VALVE	24621005
6	VALVE CENTRALISER	24621006
7	FLAPPER VALVE	24621007
8	BOTTOM VALVE	24621008
9	LINER	24621009
10	PISTON	24621010
11	GUIDE BUSH	24621011
12	CASING	24621012
13	SLIPT SPACER	24621013
14	BIT RETAINING RING	24621014
15	O RING	24621015
16	FRONT CHUCK	24621016



While assembling the hammer ensure the specified gap between the shoulders of Wear sleeve and Back head as shown beside. There be no gap at the Driver chuck end. should

GENERAL SPECIFICATIONS		
Drill Pipe Connection	RD 50-6 BOX	
Bit Shank Type	BR2	
Length w/o shoulder to shoulder	810 mm	30.2"
Length with bit extended	885 mm	34.8"
Weight w/o bit	13.5 Kgs	26.7 Lbs
Backhead across flats	47.5 mm	1.9"
Button Bit size	70 - 89 mm	2.75" - 3.5"
Outside diameter	62 mm	2.4"
Piston Weight	1.7 kgs	3.7 lbs
Maximum Operating Pressure	12 bar	175 psi

Air Consumptions

Pressure	Ltrs/ Sec	SCFM
10 bar/ 101 psi	53	112
10 bar/ 145 pi	75	159
12 bar/ 175 psi	90	190

A NEW DIMENSION IN ROCK DRILLING TOOLS



A NEW DIMENSION IN ROCK DRILLING TOOLS



G-ROC MINING & CONSTRUCTION PRIVATE LIMITED

225/P & 226/P, Phase -II, IDA, Cherlapally, Secunderabad,
Telangana, India

Contact : +91 9177090933, +91 9985681078

Email: sales@g-rocmining.com